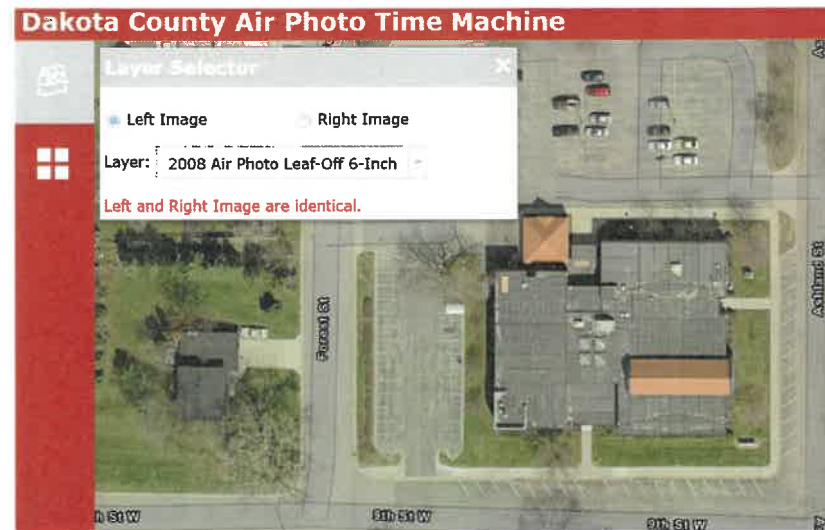


2025 Our Saviour's Landscape Update Request

Background

Landscaping next to the building is dated and past it's useful life.
The existing plantings have been in place since at least 2008



Ground is not sloped sufficiently to provide proper drainage in some areas.

See next slide

Lawn Irrigation is not effectively sized, too many spray heads per zone.

Boulevard trees are in poor health

Request for Landscape design recommendations where sent out Fall of 2024 to:

Hoffman and McNamara

Precision Landscape

Wild Violets

Elegant Landscapes

All suppliers requested funding to provide a design drawing except Elegant Landscapes.

Request funding to support the following in this phased approach

Phase 1

Remove trees next to building on North side of the building

Update landscaping around building

Phase 2

Improve lawn irrigation

Phase 3

Trim boulevard trees to improve tree health

Proposed landscape design incorporates the 3 existing memorial benches and adds a seating boulder to a patio space at the North entrance.

Plantings to be used require minimal maintenance.

Design improves visual appeal to signage, statue, stained glass, cross and three entryways.

Design allows for seasonal planters at south entrance



Spending Breakdown is:

Phase 1-North side tree removal - \$2,000

Phase 1-Remove Pole lights at South Entrance - \$500.00

Phase 1-Landscape removal and new install - \$40,650

Phase 2-Irrigation Update - \$7,500

Phase 3-Trim boulevard tree's - \$10,000

Total Request is \$60,650

Funding sources

Memorial and Gifts - \$9,500

Undesignated Bequest - \$10,000

Congregation fundraising - \$41,000

Re-designate funds in other accounts with approval

Entire project can be completed by fall of 2025 or spread out project in phases over 2 years. Phase 1 & 2 in 2025 and trim Boulevard tree's in 2026.

Material Picture List



'Fire Alarm' Coral Bells



'White Gloria' Astilbe



'All Gold' Japanese Forest Grass



'Sakura' Pig Squeak 14-16"H x 16-20"W



'Bobo' Hydrangea 3-4'H+W



'Spilled Wine' Weigela 2-3'H x 2-3'W



'Midnight Sun' Weigela 1-2'H x 1-2 W



'Red Sprite' Winterberry 3-4' H+W



'Jim Dandy' Winterberry 4-5' H+W



'Lowscape' Chokeberry



'Limeglow' Juniper



'Degroot's' Arborvitae 8-10'H x 2-3'W



'Karl Forester' Feather Reed Grass 4-5'H x 2-3'W



1.5" Bryan Red Rock



3-7" Oversized River Rock



Vinyl Edging



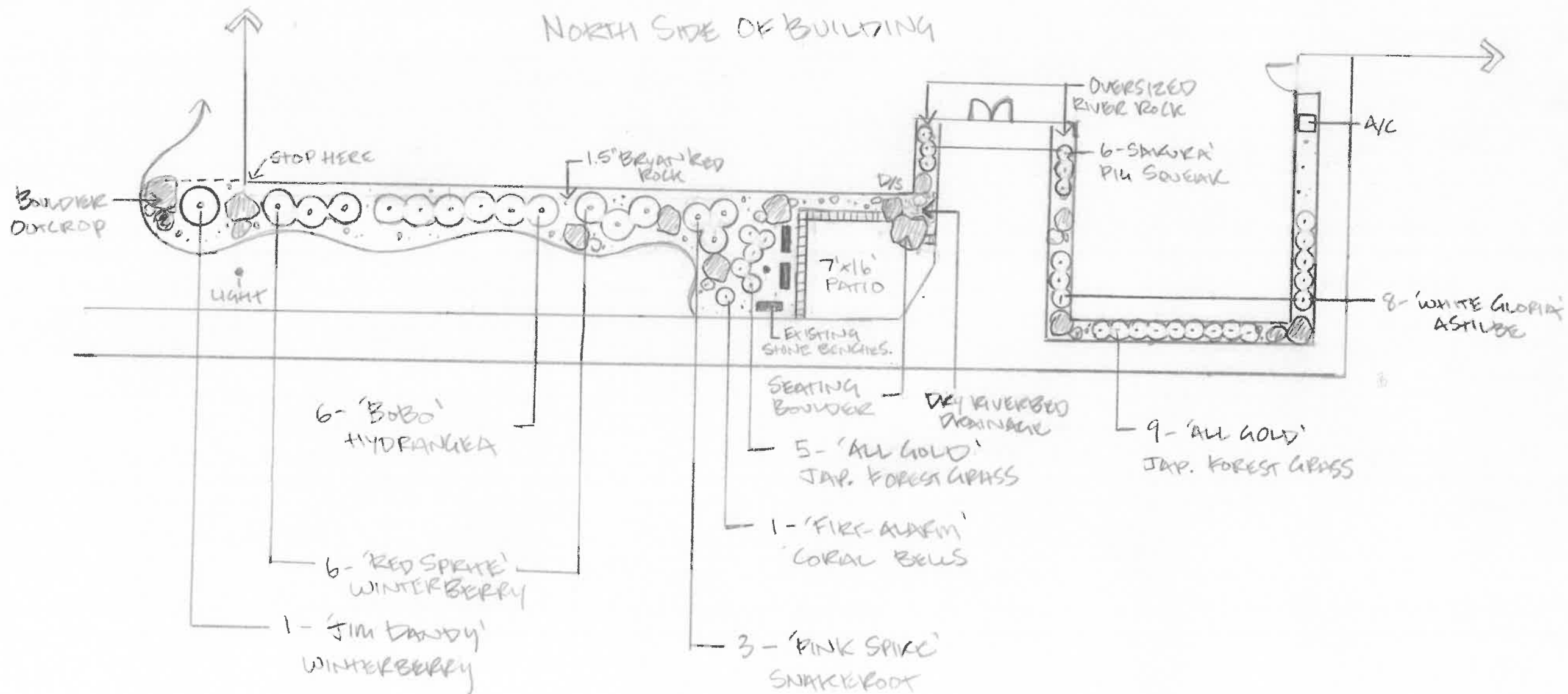
Seating boulders by paver patio



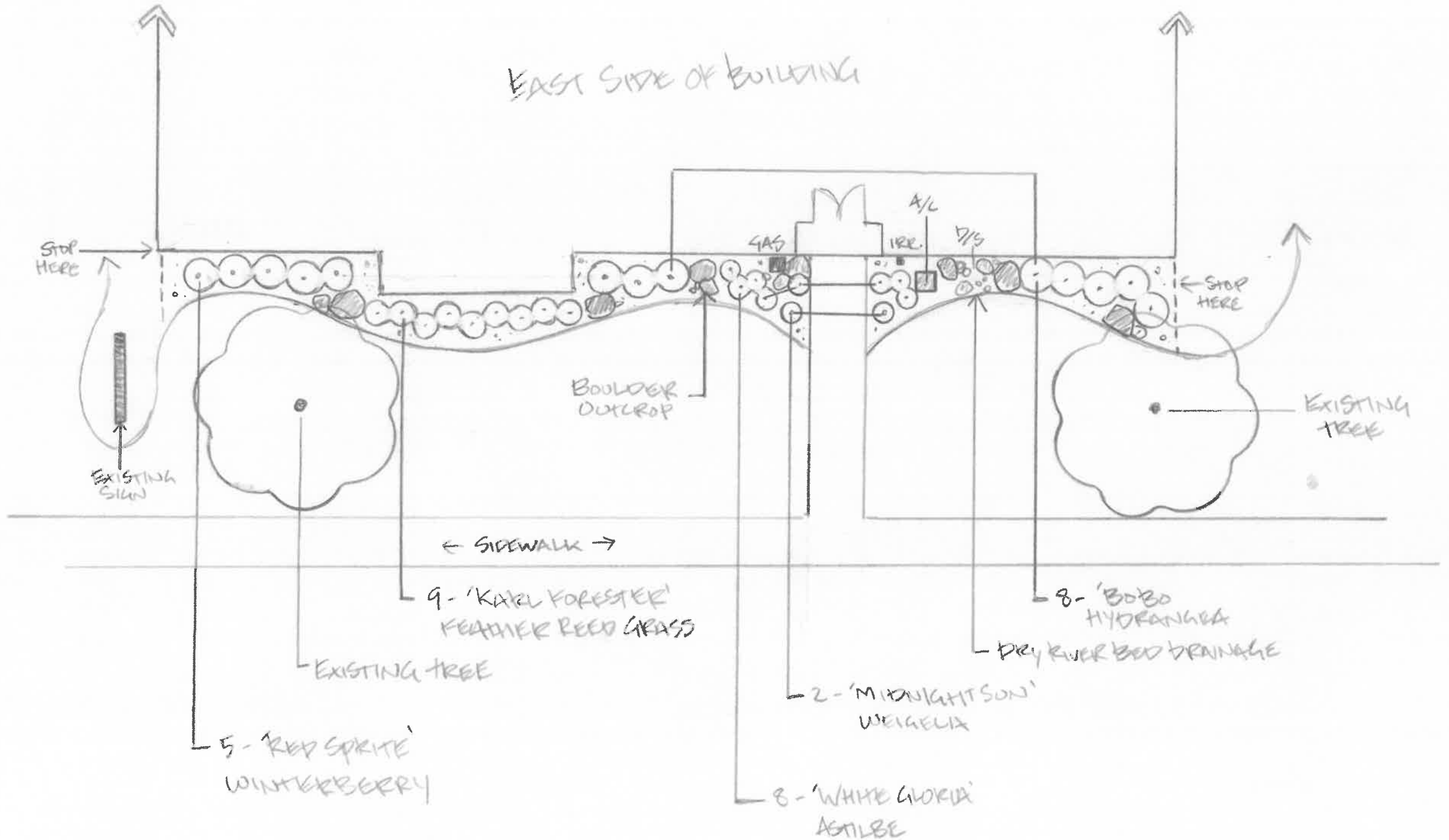
Boulder Outcrop



Dry river bed – drainage system



EAST SIDE OF BUILDING



SOUTH SIDE OF BUILDING

